

# GBX Financial - Standalone Installation

## Abstract

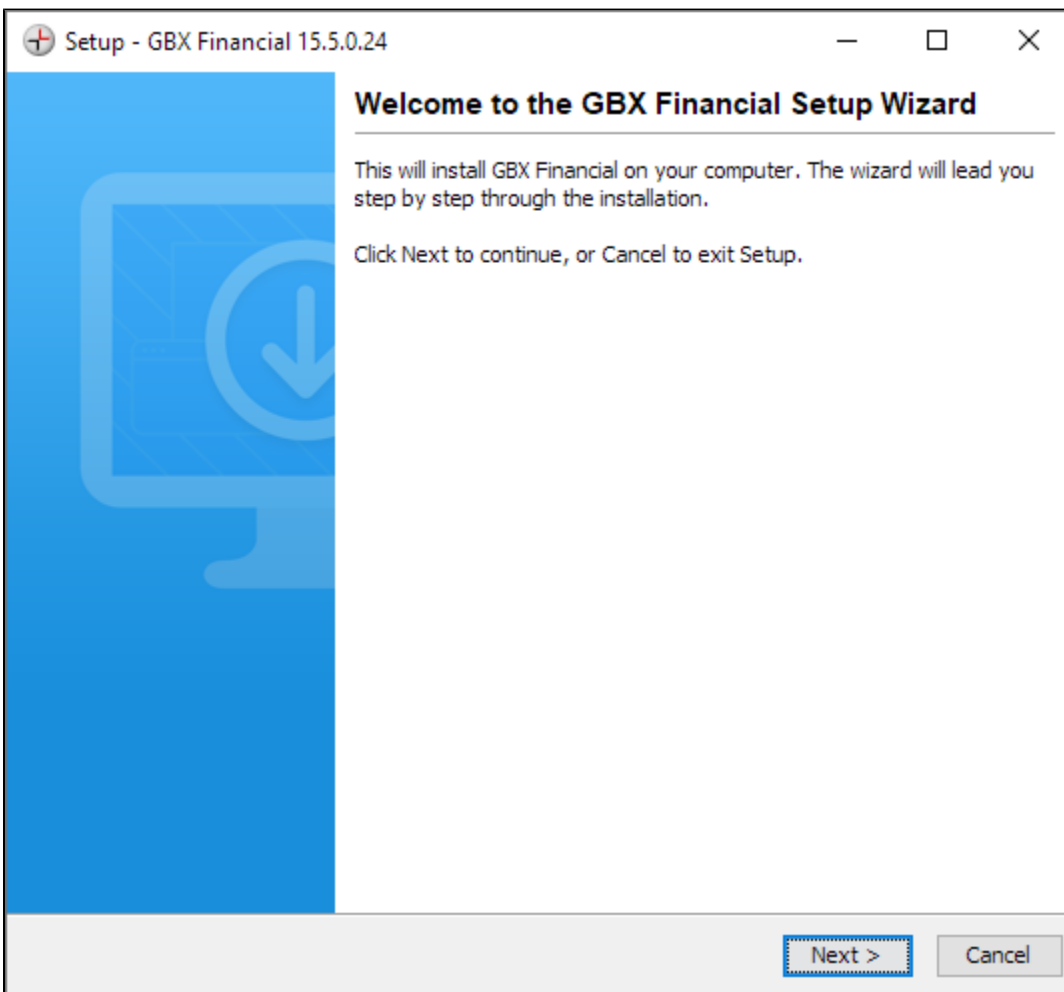
For those clients who prefer not to launch GBX Financial through Java WebStart, BGC Group provides standalone Windows installation. Installation is done by running executable file **gbx-financial-setup-.exe**.

## Installation procedure

Installation procedure provides series of screens where user selects desired options. Each screen may contain buttons "**Next >**" and "**< Back**" which allows to move to next or previous screen. At any time user may exit installation by pressing "**Cancel**" button. Screen title contains version of the current Installer.

### *"Welcome" screen*

This is information screen which indicates that installation process started.



***"Installation Type" screen***

This provides a list of pre-configured environments to use GBX Financial with. Typically, clients connect to production server for normal business process. Depending on the market flavor select either "PROD - GBX Rates" or "PROD - GBX Credit" option to configure application for such use.

Clients who want to participate in UAT testing of future version should select one of the "UAT - Staging" options. In this case application will be configured to connect to UAT, or "Staging", server.

Setup - GBX Financial 15.5.0.24

**Installation Configuration**  
What kind of GBX Financial configuration do you want to use?

Configuration type: \_\_\_\_\_

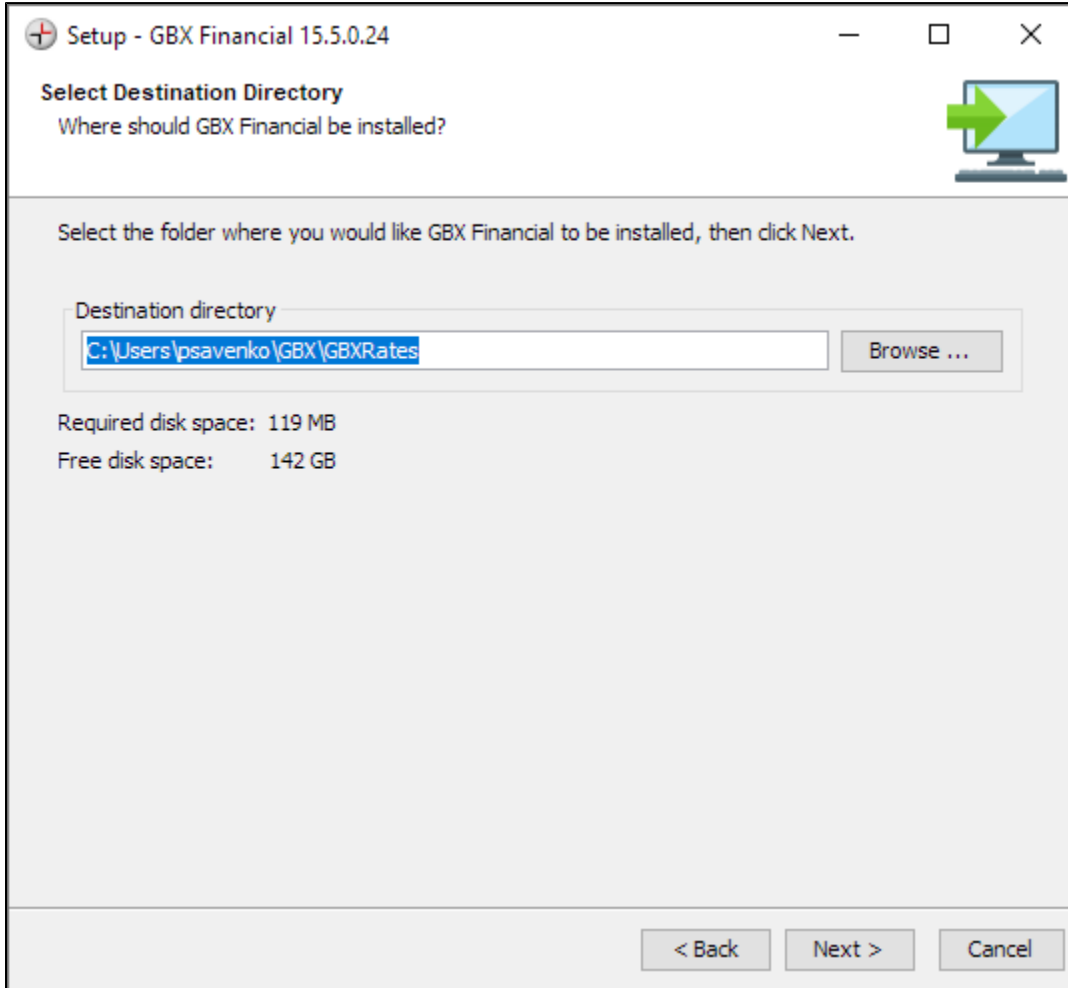
- PROD - GBX Rates
- PROD - GBX Credit
- UAT - Staging 1 (GBX Rates)
- UAT - Staging 2 (GBX Rates)
- UAT - Staging 4 (GBX Credit)
- UAT - Staging 5 (GBX Credit)
- Custom (use only if explicitly instructed)

env name:

< Back    Next >    Cancel

***"Destination Directory" screen***

This dialog allows to select directory where GBX Financial launcher will be installed.

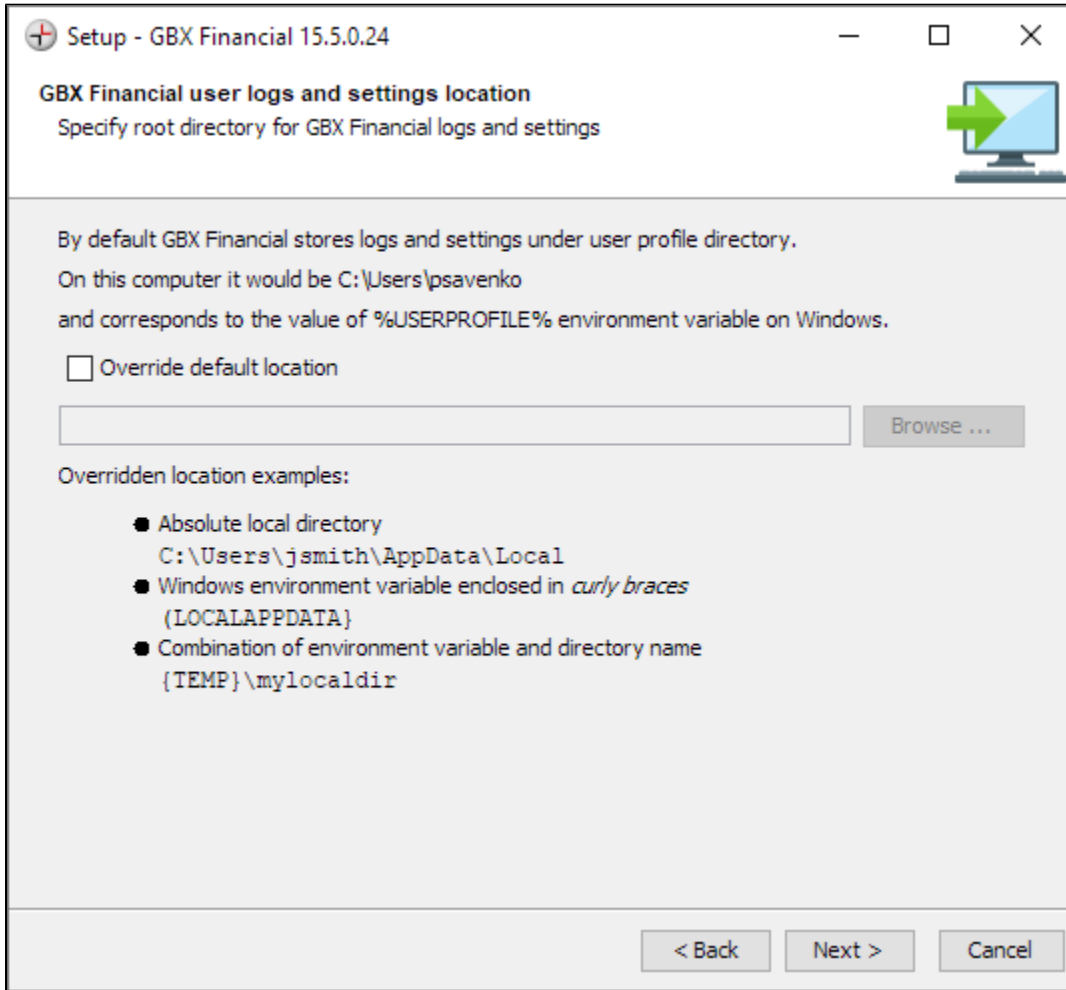


### "User logs and setting" screen

When running GBX Financial writes logs into predefined location. This dialog allows to override it.

#### Environment variables

You can specify Windows environment variables in directory name.  
Variable must be enclosed in curly braces, e.g. {MY\_VAR} - not with percent signs, e.g %MY\_VAR%.



**"Connection Settings" screen**

This allows to override default connection settings during installation process.

Setup - GBX Financial 15.5.0.24

**Network Connection Settings**  
Customize connection settings

Messaging Data Server (host[:port])  
msg-rates.gbxfinancial.com

Connection type

- SecureConnect (default port: 443)
- TCP (default port: 12606)

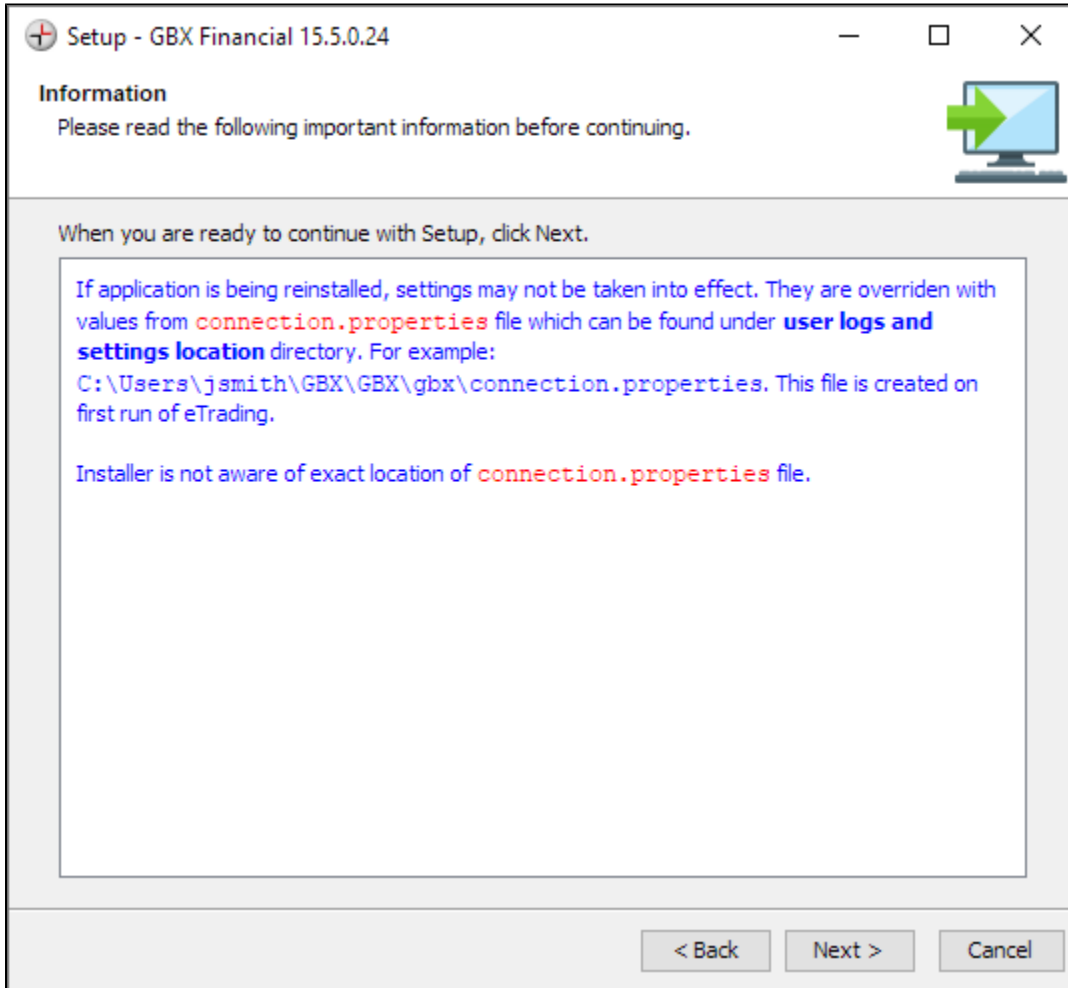
Proxy Settings for SecureConnect

- Default Proxy
- No Proxy
- Custom Proxy (host[:port])

Override BAS URL

< Back   Next >   Cancel

**"Information" screen**

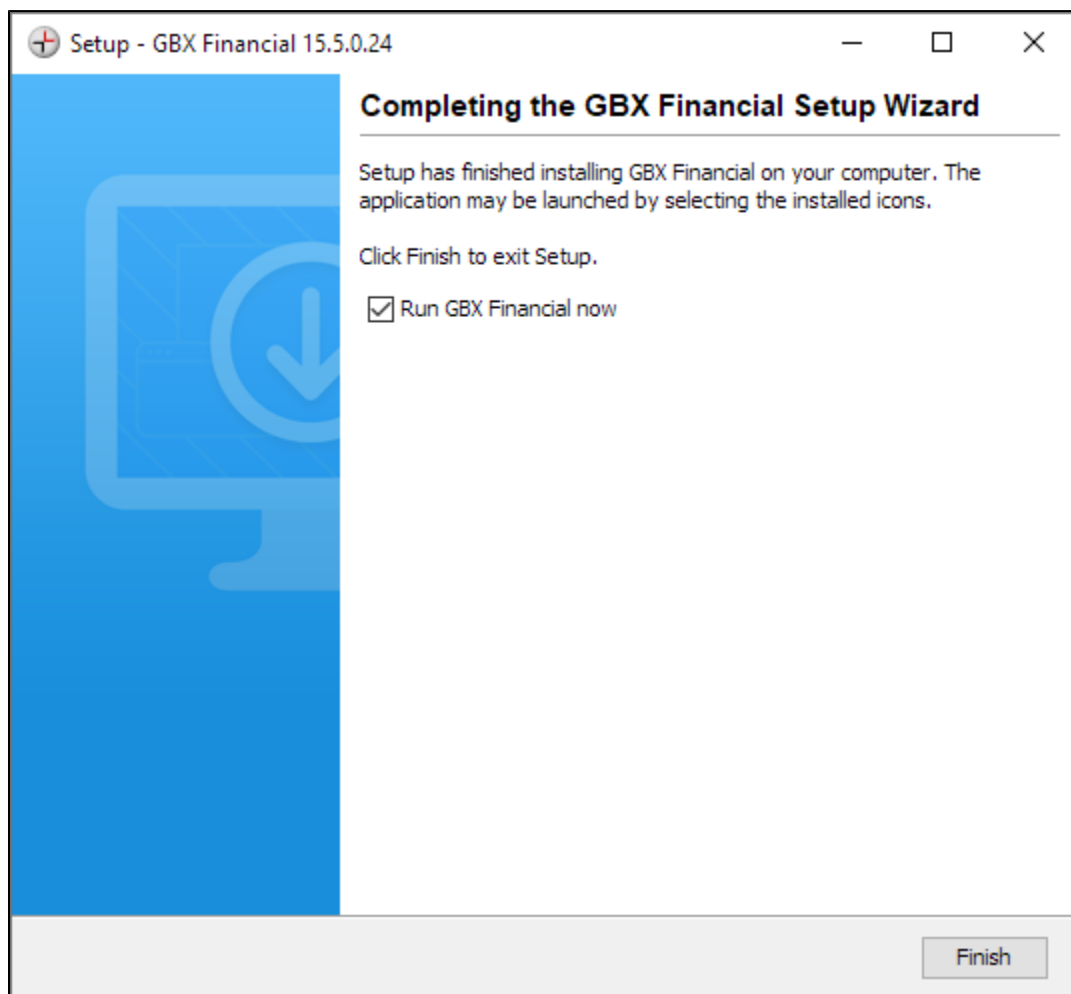


**GBX Financial launcher allows to override connection settings**

At the end of setup Installer saves connection settings in a presumably read-only `*.vmoptions` file. GBX Financial launcher allows to override those settings but keeps them in writable `*connection.properties` file. Since the Installer is unaware of this file, `*connection.properties` remains unchanged between re-installations. This can be confusing for the user, since she expects to see installation settings. If so, please delete `*connection.properties`.

***"Installation Completed" screen***

This is final screen informing that installation was done.



Clicking on "Finish" button with "Run GBX Financial now" checked launches GBX Financial login dialog

GBX GBX

**GBX**

Username:

Password:

Auto-login on this PC

Auto-Launch on Windows startup

For assistance:  
New York +1 212 610 2300  
London +44 (0) 207 894 8600  
Hong Kong +852 3477 7827

[eOperations@bgcpartners.com](mailto:eOperations@bgcpartners.com)

[Connection Settings](#)

**Login** **Exit** **Reset**

Forgot your Password? Use "Reset" button to create a new password (requires a valid email address on file for your account).

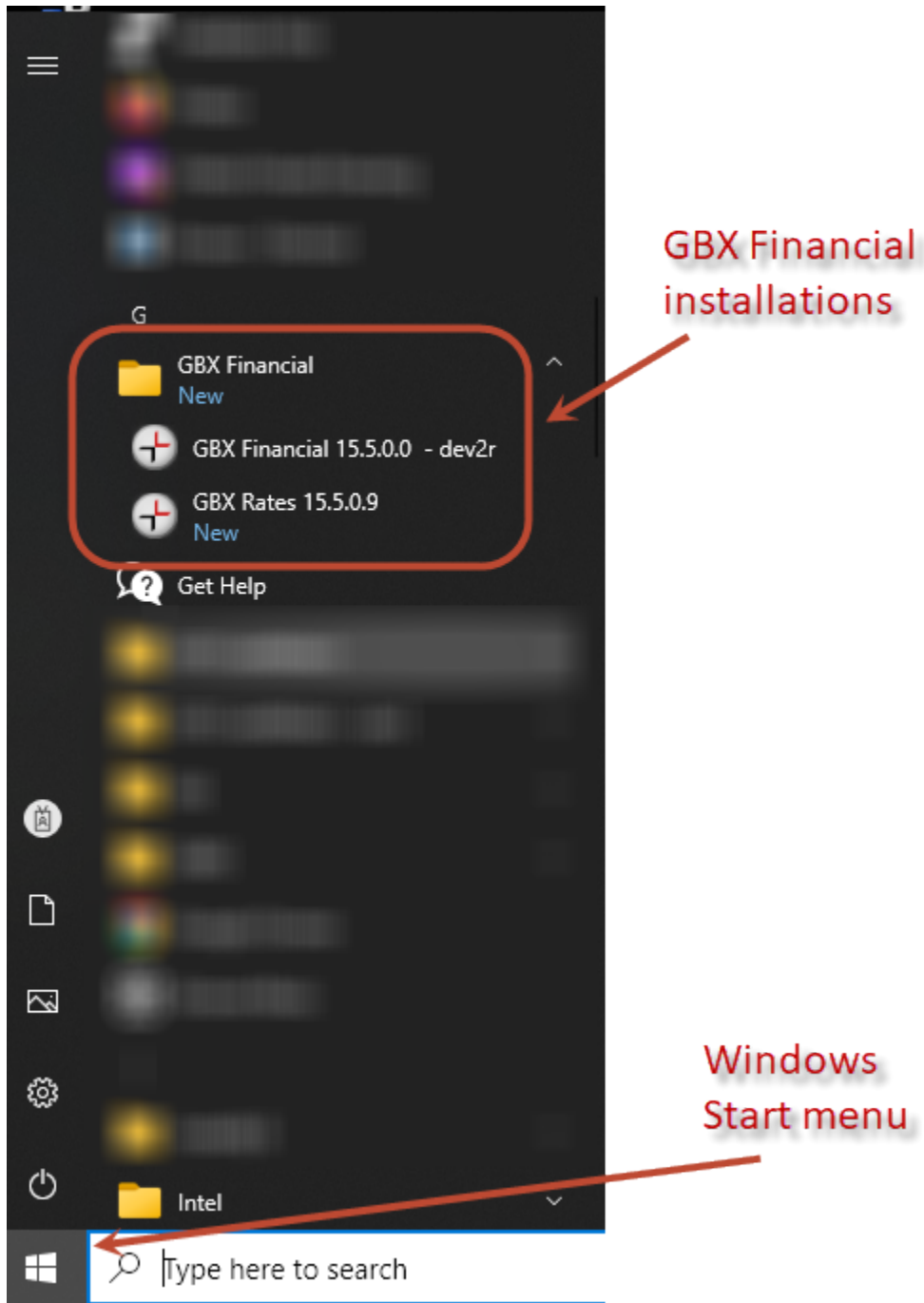
**CONSOLIDATED CREDIT & RATES MARKETS**

Copyright (C) 2019 BGC Technology International Limited and BGC Partners Inc. All rights reserved



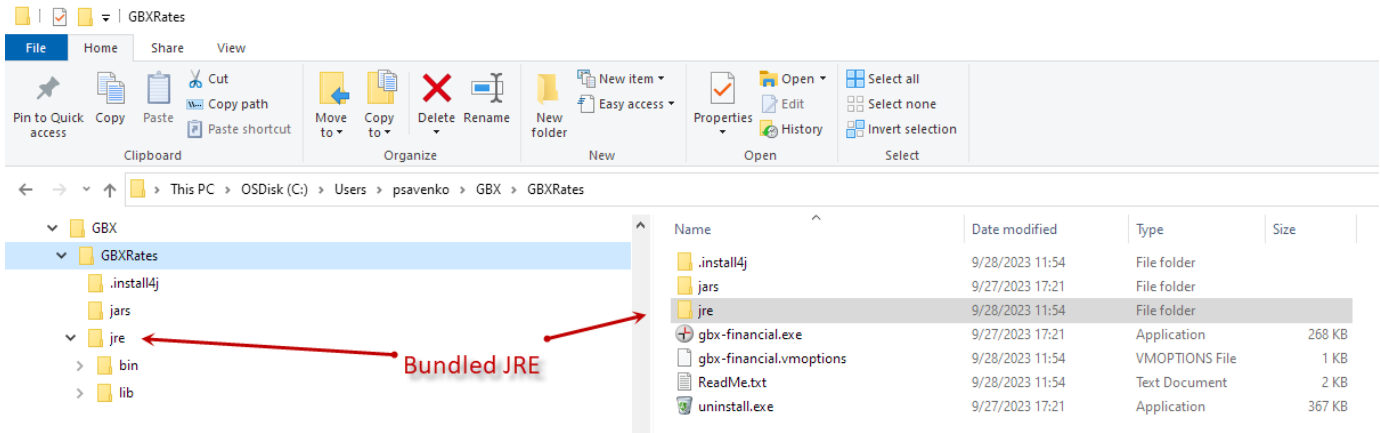
## Launching GBX Financial

GBX Financial Launcher will show as a program in "GBX Financial" group of the Windows Start menu



## Updating bundled JRE

GBX Financial is a java application and requires **Java Runtime Environment (JRE)** present to run. The GBX Financial installer automatically deploys bundled JRE. The JRE can be found under `<installation directory>\jre` directory. Note, that other applications will not be able to use such a JRE.



It is possible to manually update bundled JRE after installation. This can be done using any of the following ways.

### Replace bundled JRE directory contents

It requires to replace the contents of `<installation directory>\jre` directory with another JRE.

**PROS:** This JRE version is available only to the GBX Financial launcher. Other existing JRE's on the system are fully masked.

### Delete bundled JRE directory

It requires to delete the `<installation directory>\jre` directory completely. This assumes presence of another JRE on the system. Upon GBX Financial launcher startup JRE's will be searched in the following order:

1. Windows registry and standard locations.
2. Environment variable **JAVA\_HOME**.
3. Environment variable **JDK\_HOME**.

If no JRE was found, the GBX Financial launcher fails to start.

**PROS:** This allows to update JRE in a central way for all java applications.